



**COLDCHOICE FOODS
BROCHURE
2024**



Sliced Bacon 2kg

BCCAT - Catering back bacon

BCBRE - Select back bacon

BCAPR - Prime back bacon

BCAST - Supertrim back bacon

BCSTK - Streaky bacon

BCSMKB - Smoked back bacon

BCSMKSTK - Smoked streaky bacon

BCQS2 - Quality back bacon

BCTA2 - Taylors back bacon

Pork & Gammon

THS - Horseshoe whole

SLIP - Slipper

GSTDC10 - 10oz D-cut gammon steak

BCSH - Ham Shanks

VMBK - Whole dry cure bacon back

SMKKBK - Smoked dry cure bacon back

RMP - Minced pork kg

RROPORK - Pork loin rind on rolled & scored 5-6kg

RPL - Pork loin rindless 5-6kg

RPSS - Pork loin steak 4-10oz

PPTHs - Pork Tomohawk 20oz

PORKRIB - Pork Loin Ribs per kg

PKCOL - Pork Collar kg

RPSHBR - Boneless pork shoulder kg

RPBEF - Pork Belly boneless flat kg

RPF - Pork Fillet kg

BJPMR - Pork middle joint kg





Cooked meats

BBWG - Whitebert boiled ham full/half kg

HCH - Crumbled ham half kg

HFH - Roast Festive ham kg

HHRH - Honey roast ham half kg

5STH - Sliced honey and sugar glazed ham 500g

5SBH - Boiled ham 500g

SMKCHIX - Smoked chicken fillets 170g

Streamed chicken fillet 2.5kg

HRTOPSIDE - Roast natural topside half kg

HRB - Silverside half kg

CBST5 - Sliced roast topside 500g

5SRB - Sliced roast silverside 500g

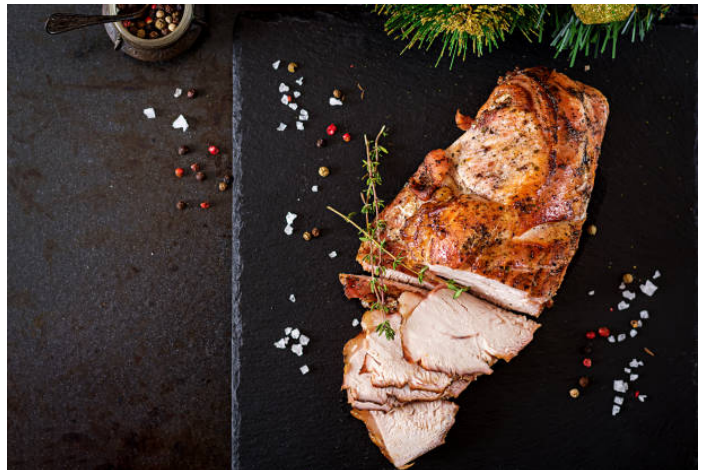
whole pastrami kg

5SPA - Sliced cooked pastrami 500g

RT - Roast turkey breast kg

5STT - Sliced roast turkey breast 500g

5SCB - Sliced Corned beef 500g



Raw Chicken

Chicken fillet 200-230g 5kg

Chicken fillet 170-200g x 10

Chicken supreme 7-8oz x 10

Chicken fillet skin on 250g 5kg

Whole chicken 1.3kg each

RCTHY - Chicken thigh meat skinless/boneless 5kg

RCTSOBL - Chicken thigh meat skin on/boneless 5kg

RCWG - 3 Joint chicken wings 20kg

RCWM - Mid wings 5kg

RCWP - Prime wings 4.5kg

RLCV - Chicken liver 2.5kg

RCM - Minced chicken kg

RCDH - Diced Chicken fillet kg

LEGCHIX - Chicken legs 200-250g each



Raw Turkey

TBH - Turkey lobe single (netted)

TBS - Turkey stag boned and rolled

TBD - Diced turkey

TURMIN - Mince turkey

Sausages

BBEPCWP - Wide pork 2.5kg

BBEPCWO - Wide old English 1.87kg

BBEPCNO - Thin old English 2.5kg

BGTKL - Wide Lincolnshire 2.27kg

BGYNL - Thin Lincolnshire 2.27kg

CO8 - Cottoms IQF 8's 4.5kg

BL8 - Blakemans IQF 8's 4.5kg

FZHS8 - Hannahs IQF 8's 4.5kg



Lamb

BEQPLLR3 - Lamb Rump 200g x 24 case

BJPLH - Lamb Henry Each

RLB4 - 6oz Lamb Burgers Each

RLLBR - Lamb Leg Boneless kg

RLSHRB - Lamb Shoulder Boneless kg

RLSH - Lamb Shank Each

RLMH - Minced Lamb kg

RLLD - Diced Lamb kg



Beef

RTOP - Topside Strung

RBRDC - D/Cut Rump

RBSW - Whole Striploin

RBFCOF - Whole Fillet (chain off)

RBRE - Whole Ribeye

RROB - Rib of Beef Bone in

BWBFB - Feather-blade

RBSH - Beef Shin

RBRI - Short Rib 4bone

RBRI - Short Rib Half 4bone

BPBM1 - Steak Mince 90vl

RMINCE - Steak mince 95vl

RDISTEAK - Diced steak

BWBWT - Wagyu Topside

BWBWBV - Wagyu Bavette



Steaks

RCBF - Fillet Steak 4-10oz

RBRE - Ribeye Steak 6-12oz

RBSS - Sirloin Steak 5-12oz

RBRS - Rump Steak 4-12oz

RBFBCH16 - Chateaubriand 16oz

RBTM - Tomohawk

RBTBSL - T-bone

RCBCDB - Cote de boeuf

BWBWG - Wagyu Tomohawk

BCBWTB - Wagyu T-bone



Burgers - (GF)

RSB3 - Steak burger fresh 3oz

RSB4 - Steak burger fresh 4oz

RSB6 - Steak burger fresh 6oz

RSB8 - Steak burger fresh 8oz



Sandwich fillings

Chinese Chicken (1kg)

Egg Mayonnaise (1kg)

Marinated Chicken Tikka (1Kg)

Chicken Breast Slices

Piri Piri Chicken

Marinated Tandoori Chicken(1Kg)

Marinated BBQ Chicken (1kg)

Marinated Mexican Chicken (1kg)

Marinated Chinese Chicken (1kg)

Marinated Cajun Chicken (1Kg)

Jamaican Jerk Chicken

Marinated Lime & Coriander chicken

Hoi Sin Duck(1kg)

Meatball & Pepper Salsa

Minted Lamb (1kg)

Pulled Chilli Beef(1Kg)

Coleslaw

Sweet & Sour Beetroot (1kg)

Potato Salad



Tinned Products

GHER - Sliced Gherkins

MJAL - Jalapeños A10

TBE - Baked Beans A10

THB - Heinz baked beans A10

TCB - Corned Beef A10

TLT - Lunch Tongue A10

TMR - Sliced Mushrooms

TOX - Ox Tongue A10

TPLM - Pork Luncheon meat 4lb

TSP - Spam 4lb

TPLT - Plum tomato A10

TSC - Sweetcorn A10

TTC - Tuna Chunks in Brine 1.88kg

TTCT - Chopped tomato A10



Sauces

APPSAU - Apple Sauce 2.5kg

HPB - HP Brown Sauce 4.6kg

PBRSP - Branston Sandwich Pickle 2.5kg

PBS - Brown Sauce 4ltr

PBS - BBQ Sauce 1ltr

PCBMU - Burger Mustard 1ltr

PCBREL - Burger Relish 1ltr

PCBS - Burger Sauce 1ltr

PCHS - Hot Stuff Sauce 1ltr

PCM - Coronation Mayo 2.5ltr

PCM1 - mayonaise 1ltr

PCMY- Yogurt & Mint 1ltr

PCPPS - Lion Piri Piri Sauce 2.27ltrs

PCRAS - Cranberry Sauce 2.5kg

PCSM - Spicy Mayo 1ltr

PCTSC - Thai Sweet Chilli 1ltr

PEML - Lions English Mustard 2.2ltr

PGMA - Garlic Mayonnaise 1ltr

PM10 - Luxury Mayo 10ltr

PM5 - Luxury Mayo 5ltr



PMFS - Food Service Mayo 10ltr

PRS - Red Sauce 4ltr

PSBS - Sachets Brown Sauce x200

PSC1 - Salad Cream 1ltr

PSCL - Lions Salad Cream

PSHOL - Hollandaise Sauce 12x1ltr

PSLBR - Sliced Beetroot 2.2ltr

PSLCD - Lion Caesar Dressing 2.27kg

PSLTSC - Lion Very Hot Chilli 2.27kg

PSMCHUT - Mango Chutney 2.5kg

PTM - Tikka Mayo 2.5kg

TSRBBQ Sauce Alfies R/S 2.25

TSRSBCD - Blue Cheese Dressing R/S 2.25

TSRSRD - Ranch Dressing R/S 2.25ltr

TSTID - Thousand Island Dressing 4.5ltr

